

CLINICAL PRESENTATION

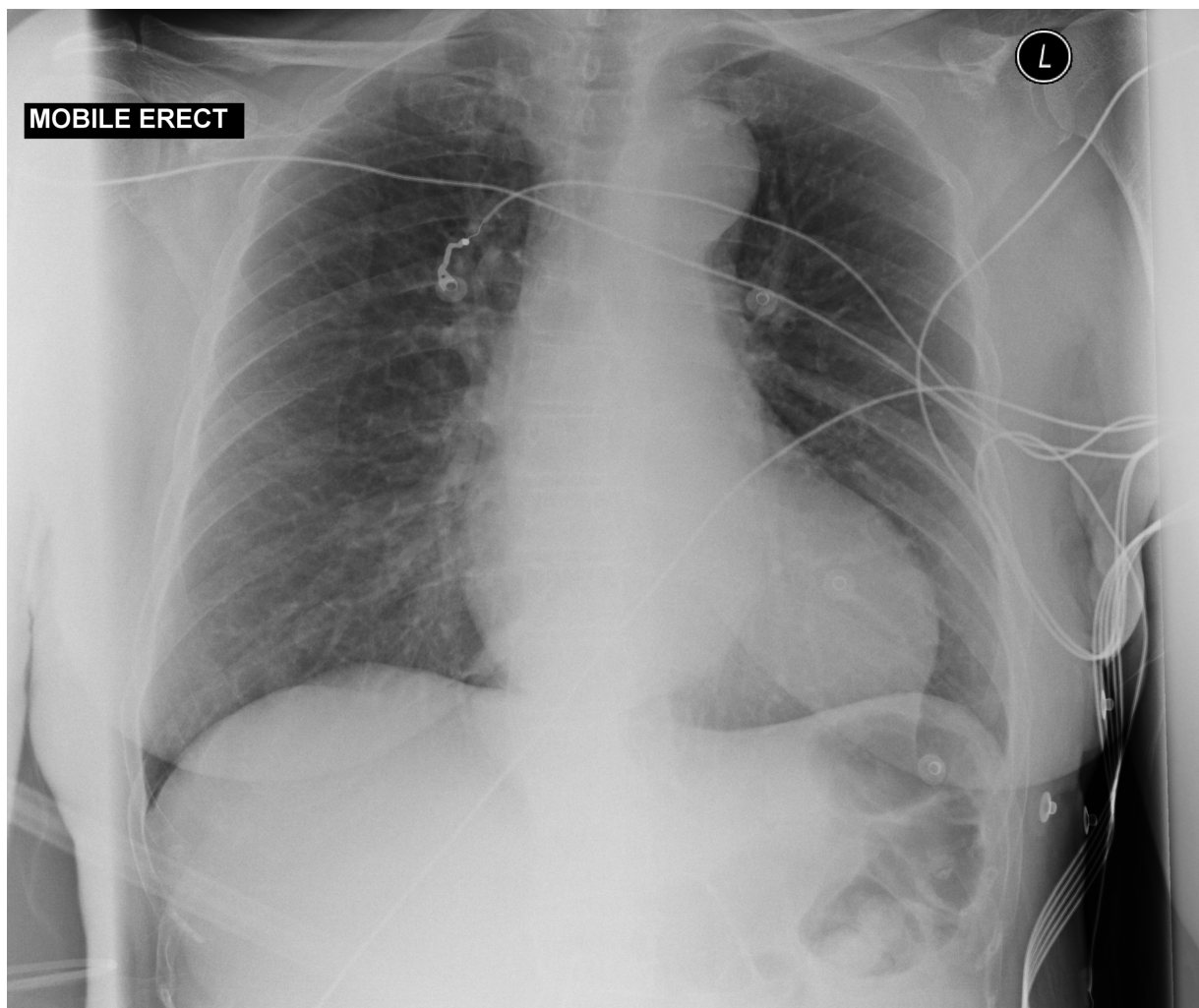
75 year old female, with history of poorly controlled hypertension, presents with sharp chest pain radiating through to her back.

What are the findings on the chest x-ray?

What imaging would you order next?

IMAGES

MOBILE ERECT CHEST X-RAY



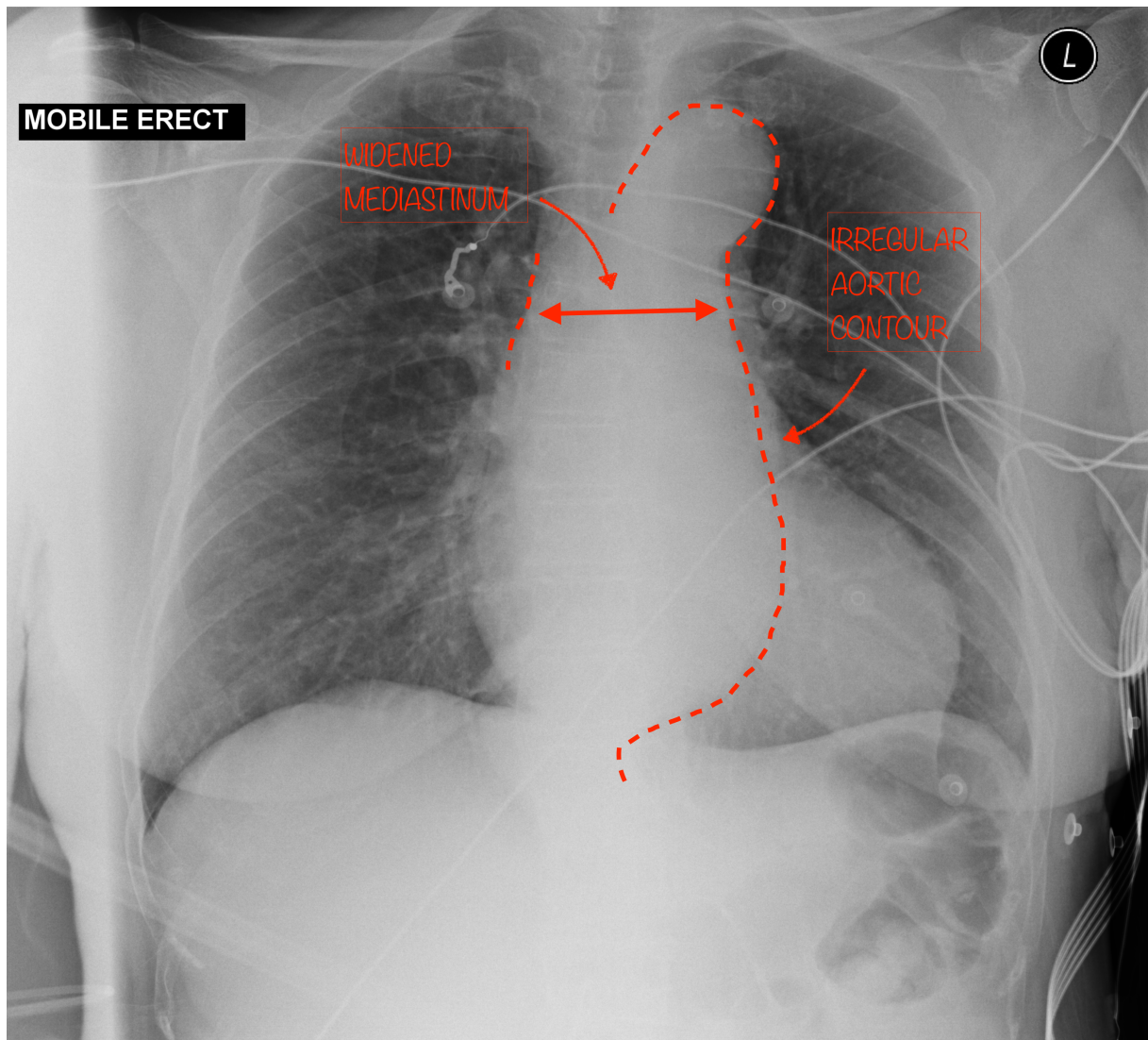
Case courtesy of Dr Henry Knipe

Radiopaedia.org <https://radiopaedia.org/>

From the case <https://radiopaedia.org/cases/50171> rID: 50171

ANNOTATED IMAGES – AORTIC DISSECTION

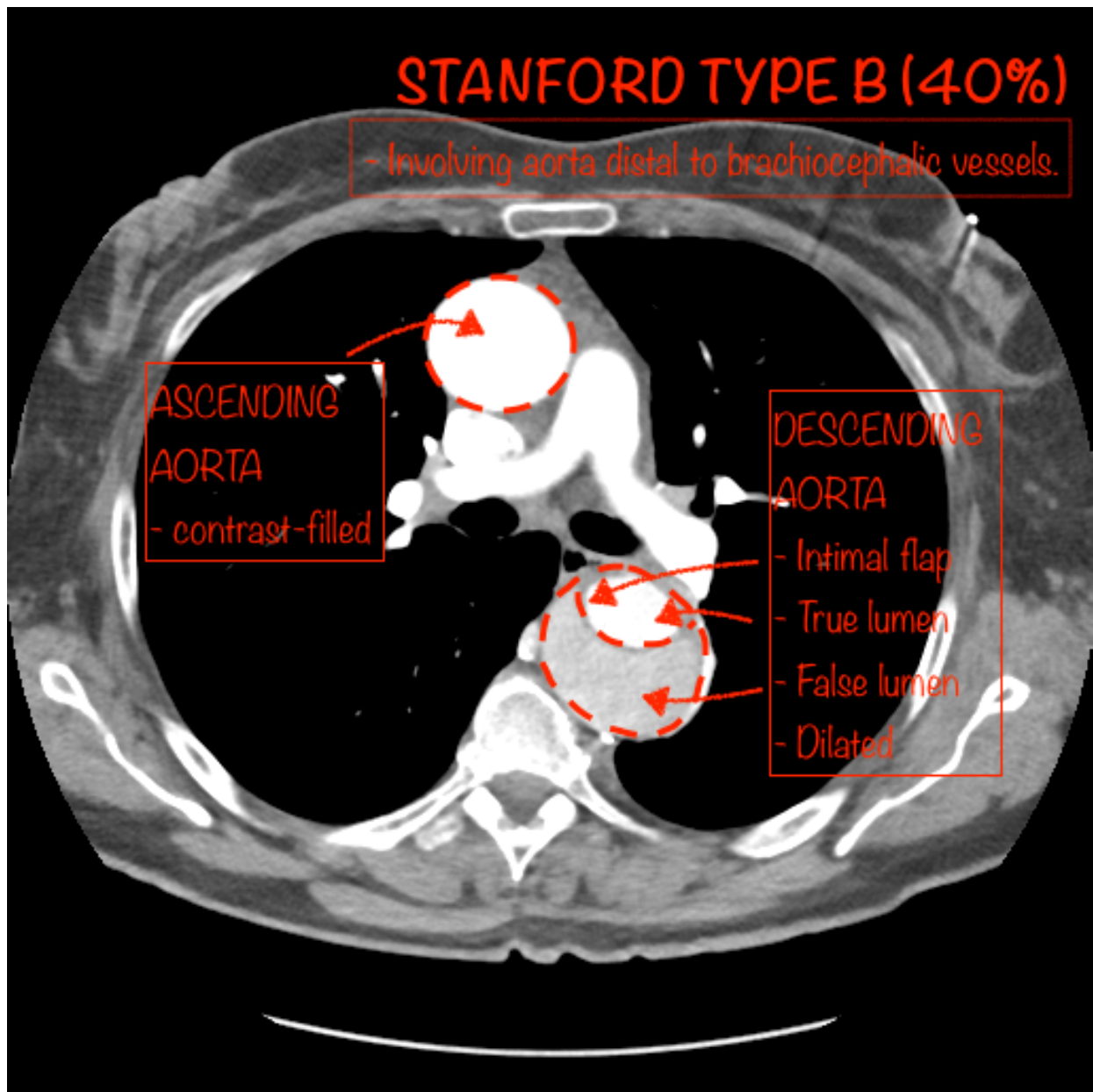
MOBILE ERECT CHEST X-RAY – CASE



Case courtesy of Dr Henry Knipe

Radiopaedia.org <https://radiopaedia.org/>

From the case <https://radiopaedia.org/cases/50171> rID: 50171

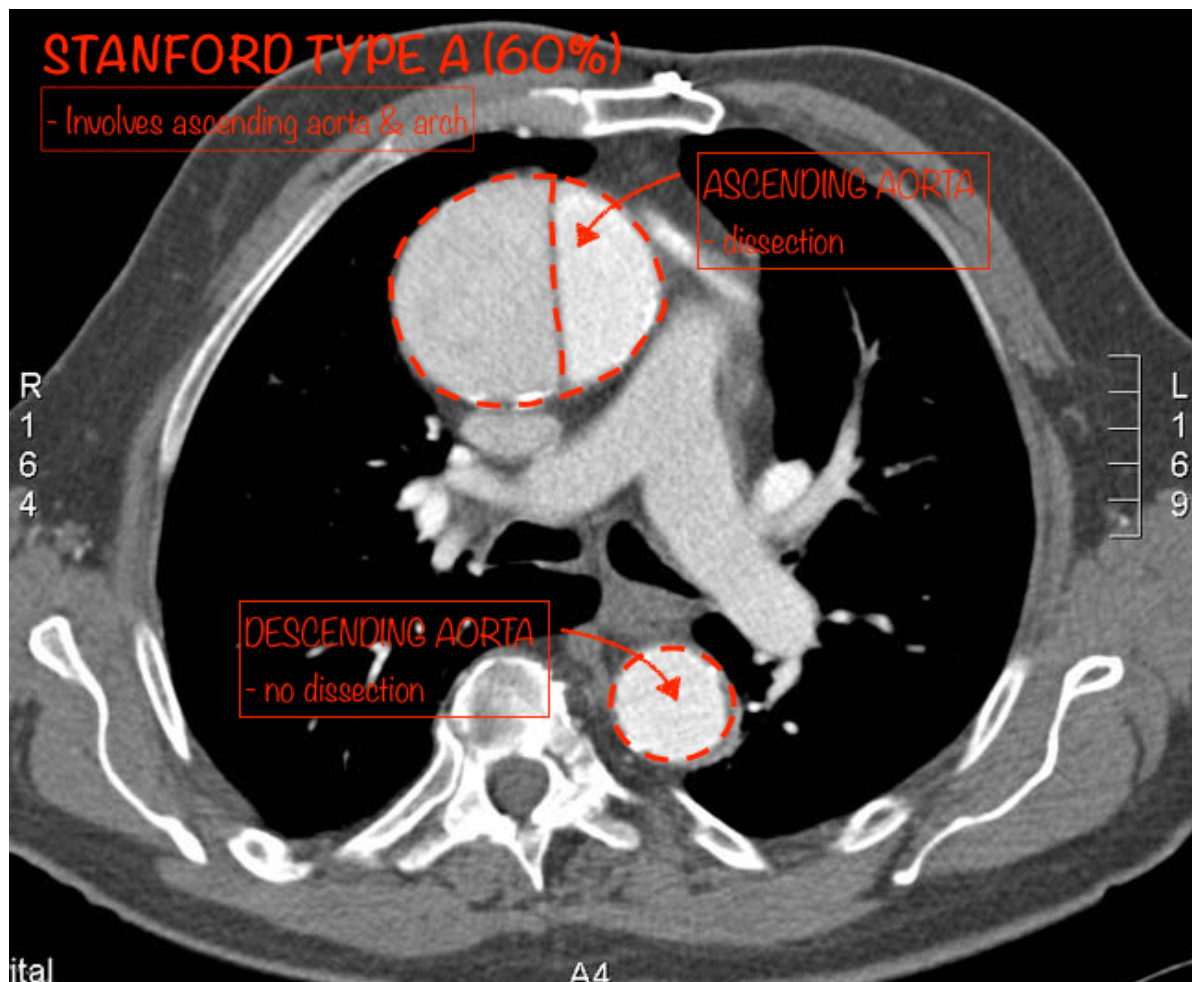


Case courtesy of Dr Henry Knipe

Radiopaedia.org <https://radiopaedia.org/>

From the case <https://radiopaedia.org/cases/50171> rID: 50171

CT CHEST + CONTRAST, AXIAL SLICE – STANFORD CLASSIFICATION TYPE A



Case courtesy of Assoc Prof Frank Gaillard

Radiopaedia.org <https://radiopaedia.org/>

From the case <https://radiopaedia.org/cases/8886> rID: 8886

RESOURCES

- https://radiopaedia.org/articles/aortic-dissection?lang=us#image_list_item_7747645
- <https://radiopaedia.org/articles/stanford-classification-of-aortic-dissection-1?lang=us>
- <https://radiologyassistant.nl/cardiovascular/thoracic-aorta-the-acute-aortic-syndrome#aortic-dissection-ad>
- <http://oxfordmedicine.com.ezp.lib.unimelb.edu.au/view/10.1093/med/9780199216369.001.0001/med-9780199216369-chapter-0002>